

Direct Steam Kettle

Direct Steam, Full Jacketed
Deep Drawn Construction
Stationary, Floor Mounted
Made in USA

LOW-RIM™ Model
LS

Standard Features



Model LS-80
with optional 2" draw-off, draw-off protection,
reinforced bar rim and lockable lid

- ◆ The Legion 316L Kettle System
 - ◇ 316L stainless liner
 - ◇ 316 stainless draw-off tube and welds
 - ◇ 316 stainless 1.5" compression draw-off
- ◆ 304 stainless kettle jacket
- ◆ 304 stainless leg socket supports, seam welded to jacket
- ◆ 304 stainless legs provided with reinforced bracing
 - ◇ 3 legs for 20 - 25 gallon, 1 5/8" diameter
 - ◇ 3 legs for 40 - 60 gallon, 2" diameter
 - ◇ 4 legs for 80 - 150 gallon, 2" diameter
- ◆ Adjustable flanged feet
- ◆ 304 stainless, one piece, domed cover, actuator-assisted on 40 - 100 gallon
- ◆ 30 psi operating pressure up to 80 gallon;
25 psi for 100 - 150 gallon
- ◆ Perforated disc strainer, 1/4" holes

Legion equipment is built to comply with applicable standards for manufacturers. Approval agencies may include ASME, NSF, UL, ETL, AGA, CSA, CGA and others. Legion reserves the right of design improvement or modification as warranted.

Models and Capacities

LS-20	20 gal.	(76 l.)
LS-25	25 gal.	(95 l.)
LS-40	40 gal.	(151 l.)
LS-50	50 gal.	(189 l.)
LS-60	60 gal.	(227 l.)
LS-80	80 gal.	(303 l.)
LS-100	100 gal.	(379 l.)
LS-125	125 gal.	(473 l.)
LS-150	150 gal.	(568 l.)

Select draw-off valve: 1.5" 2" 3"
With: compression ball type fitting
See price list for other draw-off options.

Revision 1102

Optional Features and Accessories

See price list for supplemental information regarding options

Faucet Options:

- Single or dual faucet with bracket & 12" or 18" swing nozzle
 - 48" flexible spray hose assembly (vinyl or stainless) for dual or single faucet
 - Faucet bracket
 - Automatic water filling meter
- (Call for information regarding additional faucet options)*

Prison/Security Options:

- Fasteners (screws & nuts)
- Nut driver tool
- Draw-off nut driver tool
- Draw-off protection package
- Reinforced bar rim
- Lockable lid

Other Options:

- Air eliminator valve
- Higher operating pressure
- Pressure reducing valve

Other Options:

- Mixer/agitator, 2 speed
- Insulated kettle body

Accessories:

- Draw-off drain hose
- Measuring strip
- Disc strainer; solid or perforated, 1/8 or 1/4"
- Care kit
- Steam trap kit

Covers:

- Lift-off
- 1 piece actuator-assisted 20 - 25 gal.
- 2 piece hinged

Baskets:

- Single basket, 20 - 40 gal.
- Tri-basket insert
- Nylon bag insert with spreader ring

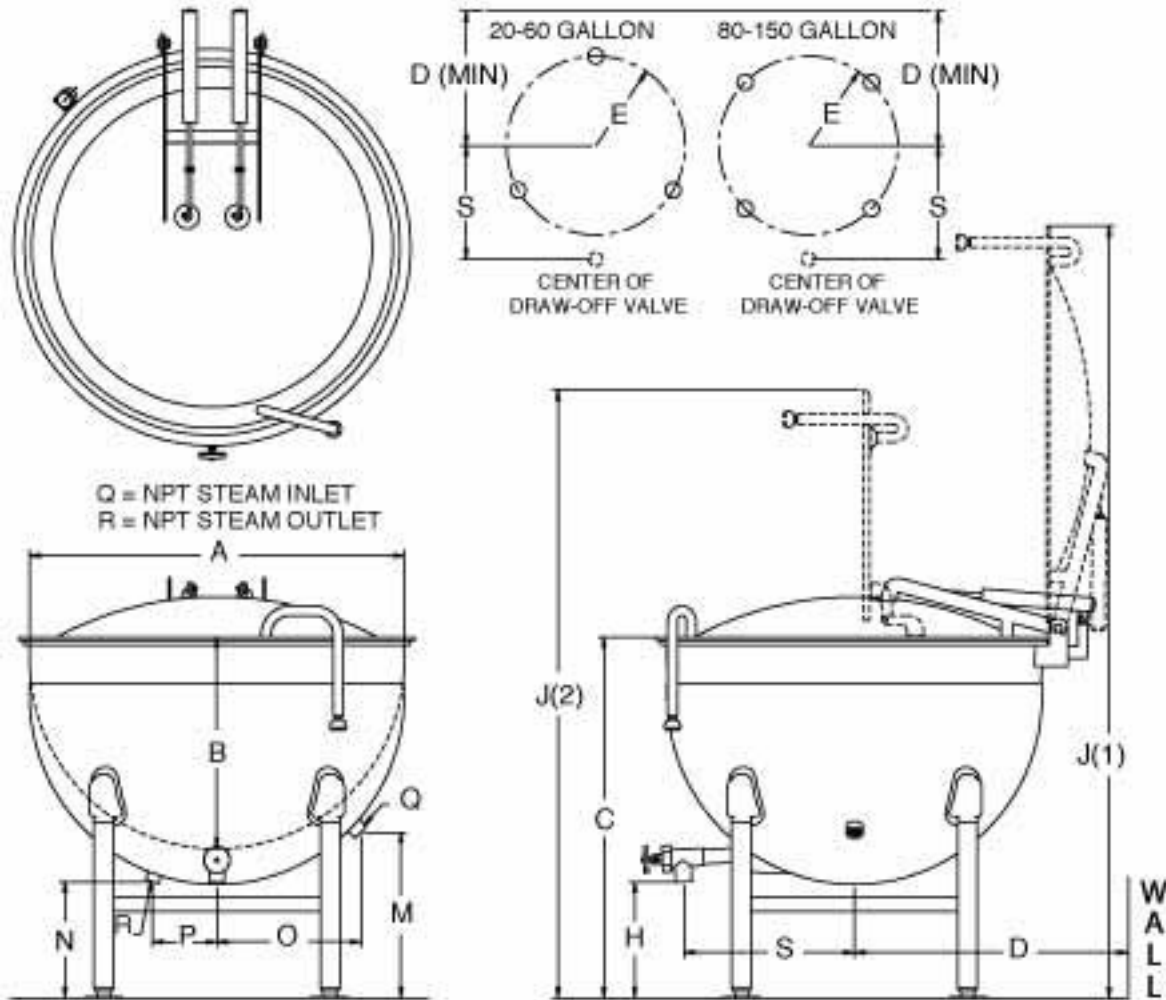
**Legion Industries, Inc., Post Office Box F, Dallas, PA 18612, (800) 833-9803, (570) 675-1595,
Fax: (570) 675-7551, www.legionindustries.com, sales@legionindustries.com**

LOW-RIM™ Model LS

Direct Steam, Full Jacketed
Deep Drawn Construction
Stationary, Floor Mounted
Made in USA

Direct Steam Kettle

DRAWING REPRESENTS MODEL LS-80



MODEL LS DIMENSIONS

Gal.	A	B	C*	D	E	H*	J1*	J2*	M	N	O	P	Q	R	S*
20	23.0	15.0	31.4	20.5	10.3	13.4	57.4	47.5	17.3	14.3	9.4	5.3	.75	.50	13.0
25	25.5	15.5	30.0	21.8	11.8	11.5	58.5	48.0	15.5	13.3	9.3	5.6	.75	.50	13.0
40	29.5	19.0	35.3	23.8	14.4	13.3	67.8	58.0	16.6	13.8	10.8	6.3	.75	.50	14.0
50	29.5	21.8	36.3	23.8	14.4	11.5	68.8	59.0	16.6	13.8	10.8	6.3	.75	.50	14.0
60	32.5	22.3	38.2	25.3	15.4	13.0	73.4	62.0	19.2	14.4	13.3	6.8	1.00	.75	14.0
80	39.0	22.0	37.5	28.5	16.5	12.5	79.5	63.0	17.5	12.3	15.0	6.8	1.00	.75	17.8
100	44.0	22.5	38.3	31.0	19.6	12.5	84.8	66.5	18.3	15.8	14.4	10.1	1.25	.75	19.8
125	44.0	26.4	42.1	31.0	19.6	12.4	89.0	70.1	17.4	15.0	14.4	10.1	1.25	.75	19.8
150	48.0	27.4	44.8	33.0	22.0	14.1	95.3	75.0	22.1	18.0	15.5	9.4	1.25	.75	23.8

*Dimensions on these drawings are applicable only when using a 1.5" diameter draw-off valve. If a 2 or 3" diameter draw-off valve is required, contact Legion for applicable dimensions.