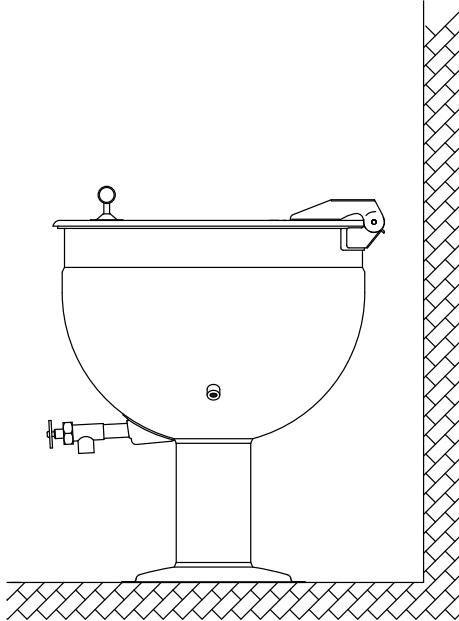


Direct Steam Kettle

Direct Steam, Full Jacketed
Deep Drawn Construction
Stationary, Pedestal Mounted
Made in USA

LOW-RIM® **Model LSP**

STANDARD FEATURES



Model LSP-60

- ◆ The Legion 316 Kettle System
 - ◇ 316L stainless liner
 - ◇ 316 stainless draw-off tube and welds
 - ◇ 316 stainless 2" compression draw-off valve
- ◆ 304L stainless kettle jacket
- ◆ 304 stainless pedestal tube
- ◆ 304 stainless pedestal base
- ◆ 304 stainless, one piece, domed cover, actuator-assisted on 60 - 125 gallon
- ◆ 30 psi operating pressure
- ◆ Perforated disk strainer, 1/4" holes

Legion equipment is built to comply with applicable standards for manufacturers. Approval agencies may include ASME, NSF, UL, ETL, AGA, CSA, CGA, and others. Legion reserves the right of design improvement or modification as warranted.

Models and Capacities

LSP-20	20 gal.	76 l.
LSP-25	25 gal.	95 l.
LSP-40	40 gal.	151 l.
LSP-50	50 gal.	189 l.
LSP-60	60 gal.	227 l.
LSP-80	80 gal.	303 l.
LSP-100	100 gal.	379 l.

Select draw-off valve: 2" 3"

With: compression ball type fitting

See price list for other draw-off options.

Optional Features and Accessories

See price list for supplemental information regarding options

Faucet Options:

- _ Single or double fill faucet with bracket & 12" or 18" swing nozzle
- _ 48" flexible spray hose assembly (vinyl or stainless) for use with dual or single fill faucet
- _ Faucet bracket
- _ Automatic water filling meter
(Call for information regarding additional faucet options)

Prison/Security Options:

- _ Fastener (nut for draw-off)
- _ Draw-off nut driver tool
- _ Lockable lid
- _ Draw-off protection
- _ Reinforced bar rim

Other Options:

- _ Air eliminator valve
- _ Higher operating pressure
- _ Pressure reducing valve

Steam Trap Kits:

- _ Steam trap kit, standard finish
- _ Steam trap kit, bright nickel-plated finish

Covers:

- _ Lift-off cover
- _ 1 piece actuator-assisted cover, 20 - 40 gallon
- _ 2 piece hinged cover

Baskets:

- _ Single basket insert, 20 - 40 gallon
- _ Tri-basket insert
- _ Nylon bag insert with spreader ring

Accessories:

- _ Draw-off drain hose
- _ Measuring strip
- _ Perforated disk strainer 1/8" holes
- _ Kettle care kit

Revision 205



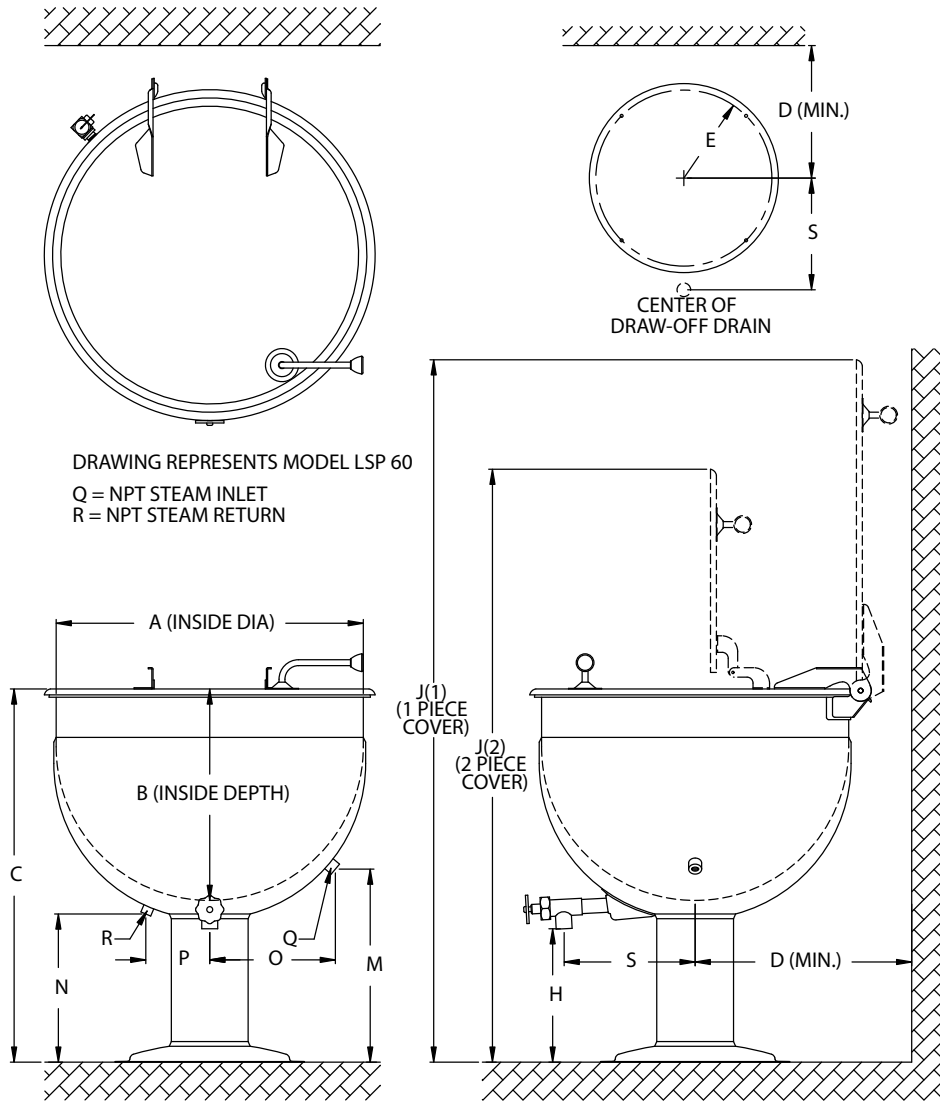
LEGION®

P. O. Box F, Dallas, PA 18612, (800) 833.9803, Fax: (570) 675.7551, sales@legionindustries.com
P. O. Box 728, Waynesboro, GA 30830, (800) 887.1988, Fax: (706) 554.2035, salesga@legionindustries.com
Web: www.legionindustries.com

LOW-RIM® Model
LSP

**Direct Steam, Full Jacketed
Deep Drawn Construction
Stationary, Pedestal Mounted
Made in USA**

**Direct Steam
Kettle**



MODEL LSP DIMENSIONS

Gal.	A	B	C	D	E	H	J1	J2	M	N	O	P	Q	R	S*
20	23.0	15.0	31.4	20.5	7.8	13.5	57.4	47.5	17.8	15.0	8.8	5.0	.75	.50	13.0
25	25.5	15.5	30.0	21.8	9.3	12.6	58.5	48.0	16.4	14.0	8.7	6.0	.75	.50	13.0
40	29.5	19.0	35.3	23.8	9.3	12.9	67.8	58.8	17.3	14.5	10.2	6.0	.75	.50	14.0
50	29.5	21.8	36.3	23.8	9.3	12.9	68.8	61.0	17.3	14.5	10.2	6.0	1.0	.75	14.0
60	32.5	22.3	38.2	25.3	11.8	13.5	73.7	62.9	19.8	15.0	12.6	7.5	1.0	.75	14.0
80	39.0	22.0	37.5	28.5	11.8	13.0	79.5	62.3	19.6	14.9	14.3	10.0	1.0	.75	17.8
100	44.0	22.5	38.3	31.0	11.8	13.1	85.3	65.6	18.3	15.9	13.7	10.0	1.25	.75	19.7

*Dimensions on these drawings are applicable only when using a 2" diameter draw-off valve. If a 3" diameter valve is required, contact Legion for applicable dimensions.

Revised 205



LEGION®

P. O. Box F, Dallas, PA 18612, (800) 833.9803, Fax: (570) 675.7551, sales@legionindustries.com
P. O. Box 728, Waynesboro, GA 30830, (800) 887.1988, Fax: (706) 554.2035, salesga@legionindustries.com
Web: www.legionindustries.com