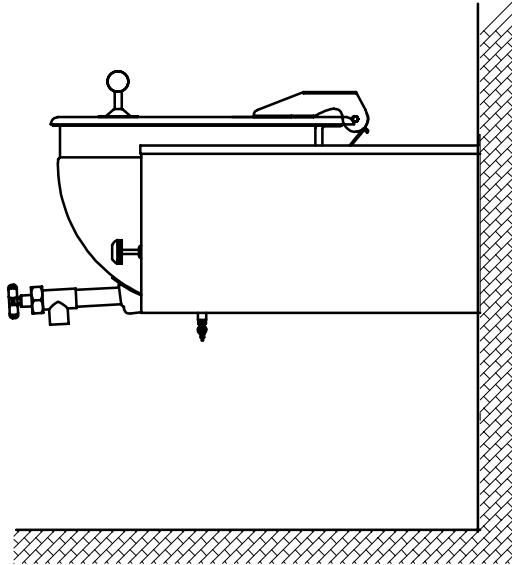


DIRECT STEAM KETTLE

FULL JACKETED, STATIONARY
WALL-CONSOLE MOUNTED
DEEP DRAWN CONSTRUCTION
MADE IN USA

MODEL LSWC

STANDARD FEATURES



Model LSWC

- ◆ **The Legion 316 Kettle System**
 - ◇ 316 stainless liner
 - ◇ 316 stainless draw-off tube and welds
 - ◇ 316 stainless 1 1/2" compression draw-off valve
- ◆ 304 stainless kettle jacket
- ◆ 304 stainless, reinforced console boxes
- ◆ Connection plumbing parts installed in console with rear connection
- ◆ 304 stainless, one piece, domed cover, actuator-assisted on 40 - 100 gallon
- ◆ 30 psi operating pressure up to 80 gallon; 25 psi for 100 gallon
- ◆ Perforated disk strainer, 1/4"

Legion equipment is built to comply with applicable standards for manufacturers. Approval agencies may include ASME, NSF, UL, ETL, AGA, CSA, CGA, and others. Legion reserves the right of design improvement or modification as warranted.

| MODELS AND CAPACITIES | | | OPTIONAL FEATURES AND ACCESSORIES | |
|---|----------|----------|--|--|
| | | | See price list for supplemental information regarding options | |
| LSWC-20 | 20 gal. | (76 l.) | <input type="checkbox"/> Single or double fill faucet with bracket & 12 or 18" swing nozzle | <input type="checkbox"/> Draw-off drain hose |
| LSWC-25 | 25 gal. | (95 l.) | <input type="checkbox"/> 48" flexible spray hose assembly (vinyl or stainless) for use with dual or single fill faucet | <input type="checkbox"/> Measuring strip |
| LSWC-40 | 40 gal. | (151 l.) | <input type="checkbox"/> Faucet bracket | <input type="checkbox"/> Perforated disk strainer 1/8" holes |
| LSWC-50 | 50 gal. | (189 l.) | <input type="checkbox"/> Automatic water filling meter | <input type="checkbox"/> Kettle care kit |
| LSWC-60 | 60 gal. | (227 l.) | <i>(Call for information regarding additional faucet options)</i> | <input type="checkbox"/> Mixer/Agitator, 2 speed |
| LSWC-80 | 80 gal. | (303 l.) | <input type="checkbox"/> Single basket insert, 20 - 40 gallon | <input type="checkbox"/> In-wall carrier for wall mounting |
| LSWC-100 | 100 gal. | (379 l.) | <input type="checkbox"/> Tri-basket insert | |
| Select draw-off valve: <input type="checkbox"/> 1 1/2" <input type="checkbox"/> 2" <input type="checkbox"/> 3" With: <input type="checkbox"/> compression <input type="checkbox"/> ball type fitting See price list for other draw-off options. | | | <input type="checkbox"/> Nylon bag insert with spreader ring | |
| | | | <input type="checkbox"/> Lift-off cover | |
| | | | <input type="checkbox"/> 1 piece actuator-assisted cover, 20 - 25 gallon | |
| | | | <input type="checkbox"/> 2 piece hinged cover | |
| | | | <input type="checkbox"/> Higher operating pressure | |
| | | | <input type="checkbox"/> Air eliminator valve | |
| | | | <input type="checkbox"/> Pressure reducing valve | |
| | | | <input type="checkbox"/> Full body insulation | |
| | | | | Prison/Security Options: <input type="checkbox"/> Fastener (<i>screws & nuts</i>) <input type="checkbox"/> Nut driver tool <input type="checkbox"/> Draw-off nut driver tool <input type="checkbox"/> Screw driver tool <input type="checkbox"/> Lockable lid <input type="checkbox"/> Reinforced bar rim |

Revision 999



LEGION® *The Finest American Quality Since 1897*

LEGION INDUSTRIES, INC. ♦ 69 MAIN ST. ♦ DALLAS, PA 18612 ♦ (800) 833-9803 ♦ (570) 675-1575 ♦ FAX: (570) 675-7551

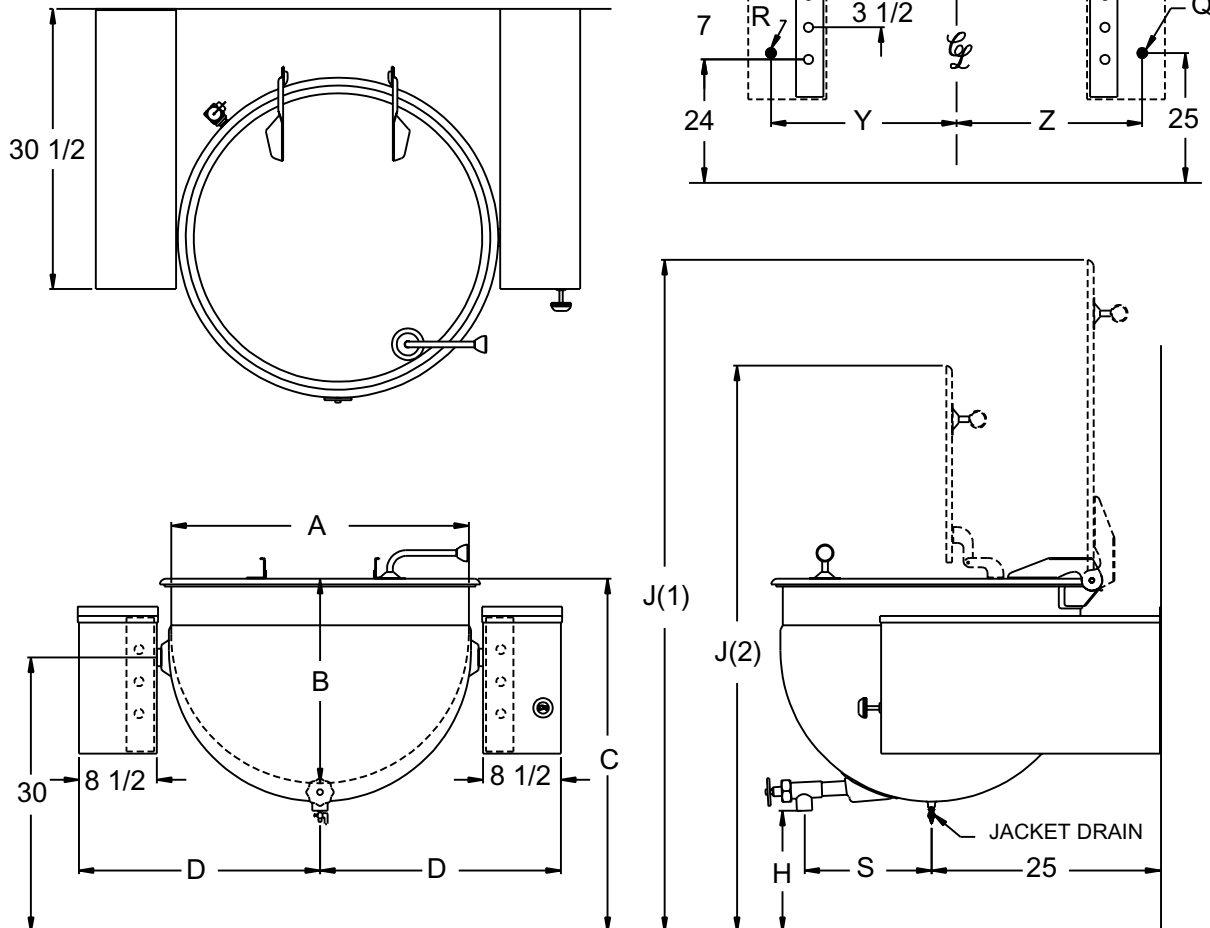
MODEL LSWC

FULL JACKETED, STATIONARY
WALL-CONSOLE MOUNTED
DEEP DRAWN CONSTRUCTION
MADE IN USA

DIRECT STEAM KETTLE

DRAWING REPRESENTS LSWC-60

Q = NPT STEAM INLET
R = NPT STEAM OUTLET



MODEL LSWC DIMENSIONS

| GAL. | A | B | C* | D | H* | J1* | J2* | Q | R | S* | T | Y | Z |
|------|------|------|------|------|------|------|------|-----|-----|------|------|------|------|
| 20 | 23.0 | 15.0 | 37.0 | 21.5 | 19.5 | 63.0 | 53.2 | .75 | .50 | 13.0 | 29.8 | 19.0 | 19.0 |
| 25 | 25.5 | 15.5 | 37.0 | 22.9 | 20.0 | 65.5 | 55.0 | .75 | .50 | 13.0 | 32.5 | 20.4 | 20.4 |
| 40 | 29.5 | 19.0 | 37.0 | 25.1 | 15.0 | 69.5 | 60.5 | .75 | .50 | 14.0 | 36.9 | 22.6 | 22.6 |
| 50 | 29.5 | 21.8 | 38.0 | 25.1 | 15.0 | 70.5 | 62.8 | .75 | .75 | 14.0 | 36.9 | 22.6 | 22.6 |
| 60 | 32.5 | 22.3 | 38.5 | 26.5 | 14.3 | 74.0 | 63.3 | .75 | .75 | 14.0 | 39.6 | 24.0 | 24.0 |
| 80 | 39.0 | 22.0 | 38.0 | 28.9 | 13.9 | 80.0 | 62.9 | .75 | .75 | 17.8 | 44.5 | 26.4 | 26.4 |
| 100 | 44.0 | 22.5 | 37.8 | 31.4 | 13.0 | 84.8 | 65.1 | .75 | .75 | 19.7 | 49.5 | 28.9 | 28.9 |

*Dimensions on these drawings are applicable only when using a 1.5" diameter draw-off valve. If a 2" or 3" diameter draw-off valve is required, contact Legion for applicable dimensions.

Revision 999



LEGION The Finest American Quality Since 1897

LEGION INDUSTRIES, INC. ♦ 69 MAIN ST. ♦ DALLAS, PA 18612 ♦ (800) 833-9803 ♦ (570) 675-1575 ♦ FAX: (570) 675-7551