

DIRECT STEAM KETTLE

2/3 JACKETED, STATIONARY
WALL-BRACKET MOUNTED
DEEP DRAWN CONSTRUCTION
MADE IN USA

MODEL LTWT

STANDARD FEATURES



Model LTWT-40

- ◆ **The Legion 316 Kettle System**
 - ◇ 316 stainless liner
 - ◇ 316 stainless draw-off tube and welds
 - ◇ 316 stainless 1 1/2" compression draw-off valve
- ◆ 304 stainless kettle jacket
- ◆ 304 stainless support arms, seam welded to jacket
- ◆ 304 stainless, one piece, domed cover, actuator-assisted on 60 - 100 gallon
- ◆ 30 psi operating pressure
- ◆ Perforated disk strainer, 1/4"

Legion equipment is built to comply with applicable standards for manufacturers. Approval agencies may include ASME, NSF, UL, ETL, AGA, CSA, CGA, and others. Legion reserves the right of design improvement or modification as warranted.

MODELS AND CAPACITIES			OPTIONAL FEATURES AND ACCESSORIES	
			See price list for supplemental information regarding options	
LTWT-10	10 gal.	(38 l.)	<input type="checkbox"/> Single or double fill faucet with bracket & 12 or 18" swing nozzle <input type="checkbox"/> 48" flexible spray hose assembly (vinyl or stainless) for use with dual or single fill faucet <input type="checkbox"/> Faucet bracket <input type="checkbox"/> Automatic water filling meter <i>(Call for information regarding additional faucet options)</i> <input type="checkbox"/> Single basket insert, 20 - 40 gallon <input type="checkbox"/> Tri-basket insert <input type="checkbox"/> Nylon bag insert with spreader ring <input type="checkbox"/> Lift-off cover <input type="checkbox"/> 1 piece actuator-assisted cover, 20 - 40 gallon <input type="checkbox"/> 2 piece hinged cover <input type="checkbox"/> Higher operating pressure <input type="checkbox"/> Air eliminator valve <input type="checkbox"/> Pressure reducing valve <input type="checkbox"/> Full body insulation	<input type="checkbox"/> Connection plumbing parts kit <input type="checkbox"/> Draw-off drain hose <input type="checkbox"/> Measuring strip <input type="checkbox"/> Perforated disk strainer 1/8" holes <input type="checkbox"/> Kettle care kit <input type="checkbox"/> Mixer/Agitator, 2 speed <input type="checkbox"/> In-wall carrier for wall mounting Prison/Security Options: <input type="checkbox"/> Fastener (<i>nut for draw-off</i>) <input type="checkbox"/> Draw-off nut driver tool <input type="checkbox"/> Lockable lid <input type="checkbox"/> Reinforced bar rim
LTWT-20	20 gal.	(76 l.)		
LTWT-30	30 gal.	(114 l.)		
LTWT-40	40 gal.	(151 l.)		
LTWT-50	50 gal.	(189 l.)		
LTWT-60	60 gal.	(227 l.)		
LTWT-80	80 gal.	(303 l.)		
LTWT-100	100 gal.	(379 l.)		
Select draw-off valve: <input type="checkbox"/> 1 1/2" <input type="checkbox"/> 2" <input type="checkbox"/> 3" With: <input type="checkbox"/> compression <input type="checkbox"/> ball type fitting See price list for other draw-off options.				

Revision 999



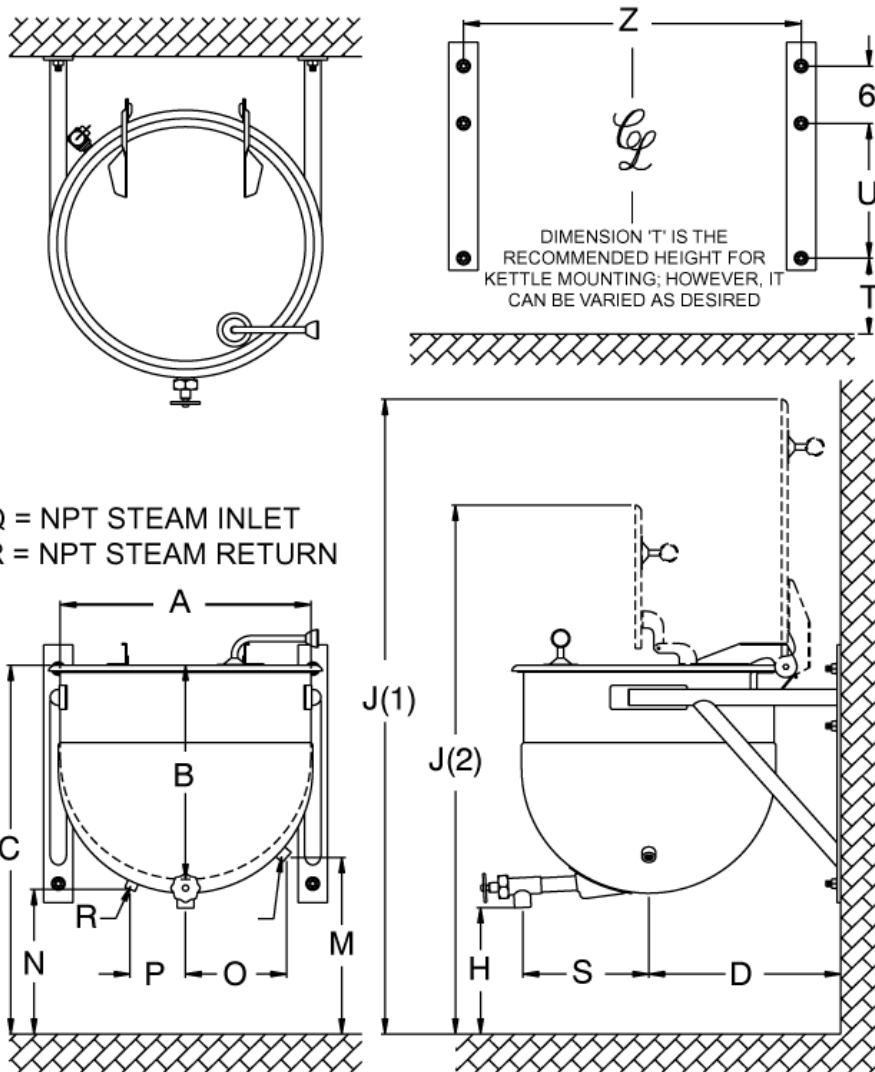
LEGION® The Finest American Quality Since 1897
 LEGION INDUSTRIES, INC. ♦ 69 MAIN ST. ♦ DALLAS, PA 18612 ♦ (800) 833-9803 ♦ (570) 675-1575 ♦ FAX: (570) 675-7551

MODEL LTWT

2/3 JACKETED, STATIONARY
WALL-BRACKET MOUNTED
DEEP DRAWN CONSTRUCTION
MADE IN USA

DIRECT STEAM KETTLE

DRAWING REPRESENTS MODEL LTWT-40



MODEL LTWT DIMENSIONS

GAL.	A	B	C*	D	H*	J1*	J2*	M	N	O	P	Q	R	S*	T	U	Z
10	16.0	14.0	31.3	19.6	14.4	49.8	43.0	16.3	15.8	5.6	4.6	.75	.50	10.1	9.0	16.5	16.5
20	22.0	16.0	31.0	17.5	13.5	56.0	46.2	16.7	14.7	7.9	5.0	.75	.50	13.0	8.2	16.5	22.5
30	23.0	20.3	35.6	18.0	13.9	61.6	51.8	17.3	15.0	8.3	5.0	.75	.50	13.0	12.9	16.5	23.5
40	25.5	22.3	36.8	19.3	13.0	65.3	54.8	17.4	14.2	9.7	5.3	.75	.50	13.0	14.0	16.5	26.0
50	29.5	21.8	36.5	21.8	13.3	69.0	60.0	17.6	14.7	10.5	6.4	.75	.50	14.0	8.8	21.5	30.0
60	29.5	25.0	39.8	21.8	13.3	72.3	63.3	17.6	14.7	10.5	6.4	.75	.50	14.0	12.0	21.5	30.0
80	32.5	27.6	42.7	23.8	13.6	78.2	67.5	17.6	14.9	10.7	6.4	1.00	.75	14.0	15.0	21.5	33.0
100	39.0	25.9	40.7	28.0	13.3	82.7	65.6	18.3	14.4	13.0	6.4	1.00	.75	17.8	13.0	21.5	39.5

*Dimensions on these drawings are applicable only when using a 1.5" diameter draw-off valve. If a 2" or 3" diameter draw-off valve is required, contact Legion for applicable dimensions.

Revision 999



LEGION The Finest American Quality Since 1897
LEGION INDUSTRIES, INC. ♦ 69 MAIN ST. ♦ DALLAS, PA 18612 ♦ (800) 833-9803 ♦ (570) 675-1575 ♦ FAX: (570) 675-7551