

Direct Steam Kettle

Direct Steam, 2/3 Jacketed
Deep Drawn Construction
Tilting, Table-Top Mounted
Made in USA

Model TAT & TFN

Standard Features



Model TAT-20

- ◆ 316L stainless liner
- ◆ 304L stainless kettle jacket
- ◆ 304 stainless insulating support tubes
- ◆ Steam supply control valve
- ◆ Positive position locking mechanism
- ◆ 30 psi operating pressure



Model TFN-20 shown mounted on optional LSC table with single fill faucet with riser

- ◆ 316L stainless liner
- ◆ 304L stainless kettle jacket
- ◆ 304 stainless support arms, base plate and trunnion housing
- ◆ 30 psi operating pressure

Legion equipment is built to comply with applicable standards for manufacturers. Approval agencies may include ASME, NSF, UL, ETL, AGA, CSA, CGA and others. Legion reserves the right of design improvement or modification as warranted.

Models and Capacities

TAT-10	10 qt.	(9.5 l.)
TAT-20	20 qt.	(19 l.)
TAT-40	40 qt.	(38 l.)
TFN-10	10 qt.	(9.5 l.)
TFN-20	20 qt.	(19 l.)

Optional Features and Accessories

See price list for supplemental information regarding options

Faucet Options:

- _Single or dual faucet with bracket & 12" or 18" swing nozzle
- _48" flexible spray hose assembly (vinyl or stainless) for dual or single faucet
- _Riser for table mounted faucet
- _Automatic water filling meter

(Call for information regarding additional faucet options)

Other Options:

- _Pressure reducing valve
- _Mixer/agitator, 2 speed
- _Air eliminator valve

Accessories:

- _Care kit
- _Single basket, 20 - 40 qt.
- _Nylon bag insert with spreader ring

Covers:

- _Lift-off, 2.5 gal.
- _Lift-off, 5 - 10 gal.

Steam Trap Kits:

- _Steam trap kit, 2.5 - 10 gal.

Tables:

- _L5C-1 Table for one (1) TFN kettle
- _L5C-2 Table for two (2) TFN kettles
- _L5C-3 Table for three (3) TFN kettles
- _R337-1 Table for one (1) TAT kettle
- _R337-2 Table for two (2) TAT kettles
- _R337-3 Table for three (3) TAT kettles

(Call for information regarding other table configurations available)

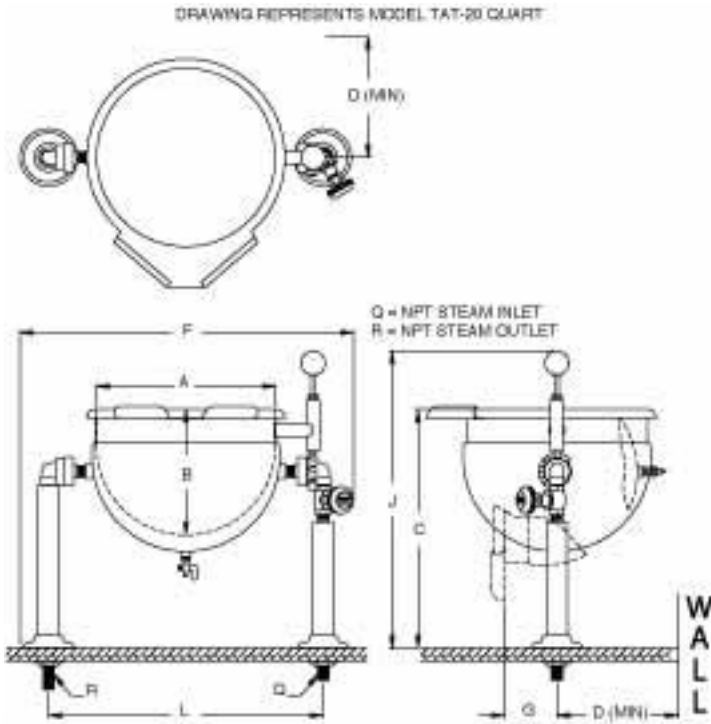
Revision 1102

**Legion Industries, Inc., Post Office Box F, Dallas, PA 18612, (800) 833-9803, (570) 675-1595,
Fax: (570) 675-7551, www.legionindustries.com, sales@legionindustries.com**

Model TAT & TFN

Direct Steam, 2/3 Jacketed
Deep Drawn Construction
Tilting, Table-Top Mounted
Made in USA

Direct Steam Kettle



MODEL TAT DIMENSIONS			
Capacity	10 Qt.	20 Qt.	40 Qt.
A	12.0	14.0	16.0
B	7.8	9.9	14.0
C	16.5	18.8	22.5
D	9.4	9.5	11.9
F	24.5	26.5	28.5
G	4.4	4.9	6.9
J	21.5	23.3	27.0
L	19.5	21.5	23.5
Q	.50	.50	.50
R	.50	.50	.50

Revision 1102

MODEL TFN DIMENSIONS		
Capacity	10 Qt.	20 Qt.
A	10.0	12.0
B	10.0	12.0
C	16.3	16.3
D	14.5	15.5
F	14.8	16.9
G	7.5	7.5
J	22.3	22.3
L	7.5	7.5
Q	.50	.50
R	.50	.50

Revision 1102

