

# Direct Steam Kettle

Direct Steam, 2/3 Jacketed  
Deep Drawn Construction  
Tilting, Pedestal Mounted  
Made in USA

# Model TWP

## Standard Features



**Model TWP-40**  
with optional automatic water filling meter

- ◆ 316L stainless liner
- ◆ 304L stainless kettle jacket
- ◆ 304 stainless, reinforced gear box
- ◆ Self-locking worm tilt gear mechanism
- ◆ 304 stainless, 2" tubular support frame
- ◆ 304 stainless pedestal base
- ◆ 30 psi operating pressure

Legion equipment is built to comply with applicable standards for manufacturers. Approval agencies may include ASME, NSF, UL, ETL, AGA, CSA, CGA and others. Legion reserves the right of design improvement or modification as warranted.

## Models and Capacities

TWP-20	20 gal.	(76 l.)
TWP-30	30 gal.	(114 l.)
TWP-40	40 gal.	(151 l.)
TWP-50	50 gal.	(189 l.)
TWP-60	60 gal.	(227 l.)
TWP-80	80 gal.	(303 l.)
TWP-100	100 gal.	(379 l.)

Select draw-off valve:  1.5"  2"  3"  
With:  compression  ball type fitting  
See price list for other draw-off options.

## Optional Features and Accessories

See price list for supplemental information regarding options

### Faucet Options:

- Single or dual faucet with bracket & 12" or 18" swing nozzle
  - 48" flexible spray hose assembly (vinyl or stainless) for dual or single fill faucet
  - Faucet bracket
  - Automatic water filling meter
- (Call for information regarding additional faucet options)*

### Prison/Security Options:

- Fasteners (screws & nuts)
- Nut driver tool
- Draw-off nut driver tool
- Screw driver tool
- Reinforced bar rim

### Other Options:

- Air eliminator valve
- Higher operating pressure
- Pressure reducing valve
- Mixer/agitator, 2 speed
- Insulated kettle body

### Steam Trap Kits:

- Steam trap kit, 20 - 60 gal.
- Steam trap kit, 80 - 100 gal.

### Accessories:

- Draw-off drain hose
- Measuring strip
- Disc strainer; solid or perforated, 1/8 or 1/4"
- Pour lip pan holder assembly
- Care kit

### Covers:

- Lift-off
- 1 piece actuator-assisted

### Baskets:

- Single basket, 20 - 40 gal.
- Tri-basket insert
- Nylon bag insert with spreader ring

Revision 1102

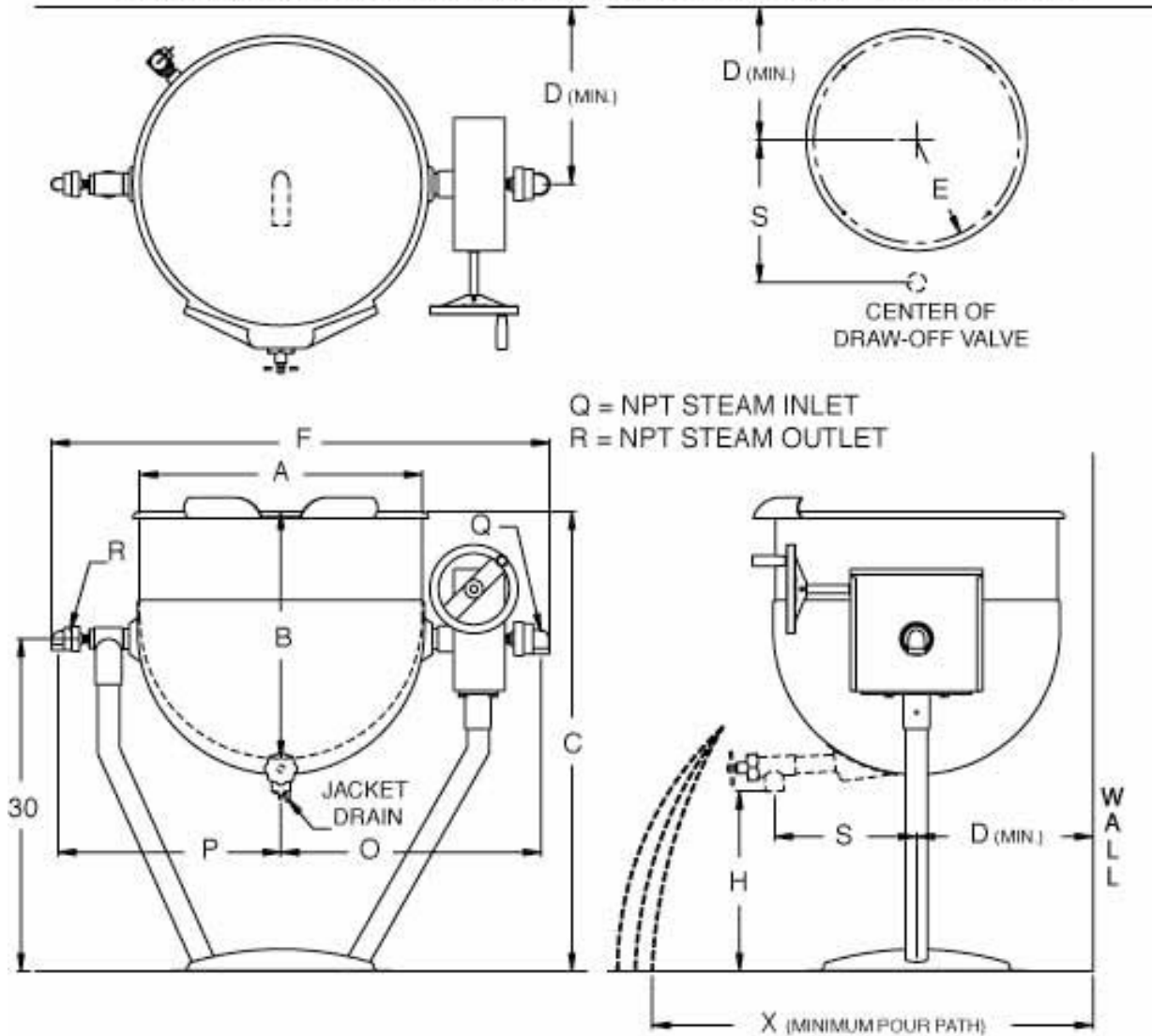
**Legion Industries, Inc., Post Office Box F, Dallas, PA 18612, (800) 833-9803, (570) 675-1595,  
Fax: (570) 675-7551, [www.legionindustries.com](http://www.legionindustries.com), [sales@legionindustries.com](mailto:sales@legionindustries.com)**

# Model TWP

Direct Steam, 2/3 Jacketed  
Deep Drawn Construction  
Tilting, Pedestal Mounted  
Made in USA

# Direct Steam Kettle

DRAWING REPRESENTS MODEL TWP-40 WITH OPTIONAL 1 1/2" DRAW-OFF



MODEL TWP DIMENSIONS

Gal.	A	B	C	D	E	F	H*	O	P	Q	R	S*	X
20	22.0	16.0	39.0	13.9	7.9	40.8	20.0	21.4	18.0	.75	.50	13.0	21.9
30	23.0	20.3	41.3	15.9	7.9	42.5	18.0	22.3	18.9	.75	.50	13.0	26.0
40	25.5	22.3	41.5	17.9	9.4	45.3	16.3	23.6	20.3	.75	.50	13.0	28.4
50	29.5	21.8	38.3	21.0	9.4	49.6	13.5	25.9	22.5	.75	.50	14.0	28.3
60	29.5	25.0	41.5	21.0	9.4	49.6	13.5	25.9	22.5	.75	.50	14.0	31.5
80	32.5	27.6	43.4	22.0	9.4	53.3	12.8	27.3	24.3	.75	.75	14.0	34.4
100	39.0	25.9	41.3	23.5	11.8	58.8	12.3	30.0	27.0	.75	.75	17.8	33.8

\*Dimensions H & S apply only if an optional 1.5, 2 or 3" draw-off is required, contact Legion for applicable dimensions.