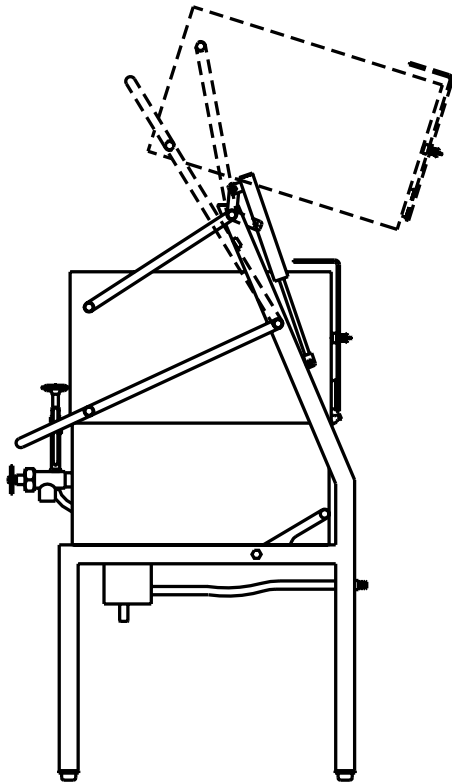


MULTI-FUNCTIONAL COOKERS

**DIRECT STEAM
INSULATED FOR SAFETY™
10° TILTING PAN
LEG MOUNTED, MADE IN USA**

SKITTLE® MODEL DSK

STANDARD FEATURES



Model DSK10-7

- ◆ 316L stainless food contact zone with:
 - ◇ 316 stainless 1 ½" compression draw-off
- ◆ 304 stainless seam welded pan body with:
 - ◇ 10° tilting pan, 31" working height
 - ◇ Insulated sides and bottom
 - ◇ Tapered access rim
 - ◇ Steam control (1" ball valve)
- ◆ Maximum operating pressure 125 psi (353°F)
- ◆ Safety valve, 125 psi
- ◆ Patented 304 stainless seam welded Capsule Lid with:
 - ◇ Variable position, actuator-assisted opening
 - ◇ Insulated sides & top
 - ◇ Adjustable steam vent
 - ◇ 304 stainless safety handle
 - ◇ "L" Lid condensate containment
- ◆ Cassette rack(s) for 12x20 food pans
- ◆ 304 stainless, seam welded component enclosure
- ◆ 304 stainless, seam welded tubular frame construction
- ◆ Single ball valve with 48" s/s flexible spray hose assembly
- ◆ Adjustable flanged feet

Legion equipment is built to comply with applicable standards for manufacturers. Approval agencies may include ASME, NSF, UL, ETL, AGA, CSA, CGA, and others. Legion reserves the right of design improvement or modification as warranted. U.S. Patent Nos. 5,553,531, 5,964,145 & Des. 371,715.

MODELS AND CAPACITIES							OPTIONAL FEATURES AND ACCESSORIES	
							See price list for supplemental information regarding options	
Model*	2.5" Insert Pans	Cooking Baskets	Griddle Area (in. ²)	Kettle (Gals.)	Frying Oil (lbs.)	Oven Volume (ft. ³)	Select draw-off valve: <input type="checkbox"/> 1½" <input type="checkbox"/> 2" <input type="checkbox"/> 3" with: <input type="checkbox"/> compression or <input type="checkbox"/> ball type fitting	
DSK10-5	10	8	703	15.2	70	7.7	<ul style="list-style-type: none"> ○ Single ball valve mounted to frame with 48" vinyl flexible spray hose assembly ○ Dual fill faucet & bracket with 48" s/s flexible spray hose assembly ○ Dual fill faucet & bracket with 48" vinyl flexible spray hose assembly ○ Automatic water filling meter <i>(Call for information regarding additional faucet options)</i> ○ Knockdown capability for 26"x66" opening <i>(shipped assembled)</i> ○ Draw-off drain spout ○ Draw-off strainer ○ Draw-off drain hose ○ #10 can holder for draw-off 	<ul style="list-style-type: none"> ○ Flat bottom scoop ○ Fry scoop ○ Perforated or solid 12x20 food pans 2½, 4, or 6" deep ○ Perforated cooking/steaming basket (11 x 20½ x 5) ○ Skittle care kit Prison/Security Options: ○ Fasteners <i>(screws & nuts)</i> ○ Nut driver tool ○ Screw driver tool ○ Draw-off nut driver tool ○ Lockable control cover ○ Draw-off protection
DSK10-7	10	8	703	21.3	70	8.5		
DSK10-9	10	8	703	27.4	70	9.4		
DSK10-11	10	8	703	33.5	70	10.2		
DSK15-5	15	12	1029	22.3	105	11.3		
DSK15-7	15	12	1029	31.2	105	12.5		
DSK15-9	15	12	1029	40.1	105	13.7		
DSK15-11	15	12	1029	49.0	105	14.9		

*DSK5(-) information available on request

Revision 101



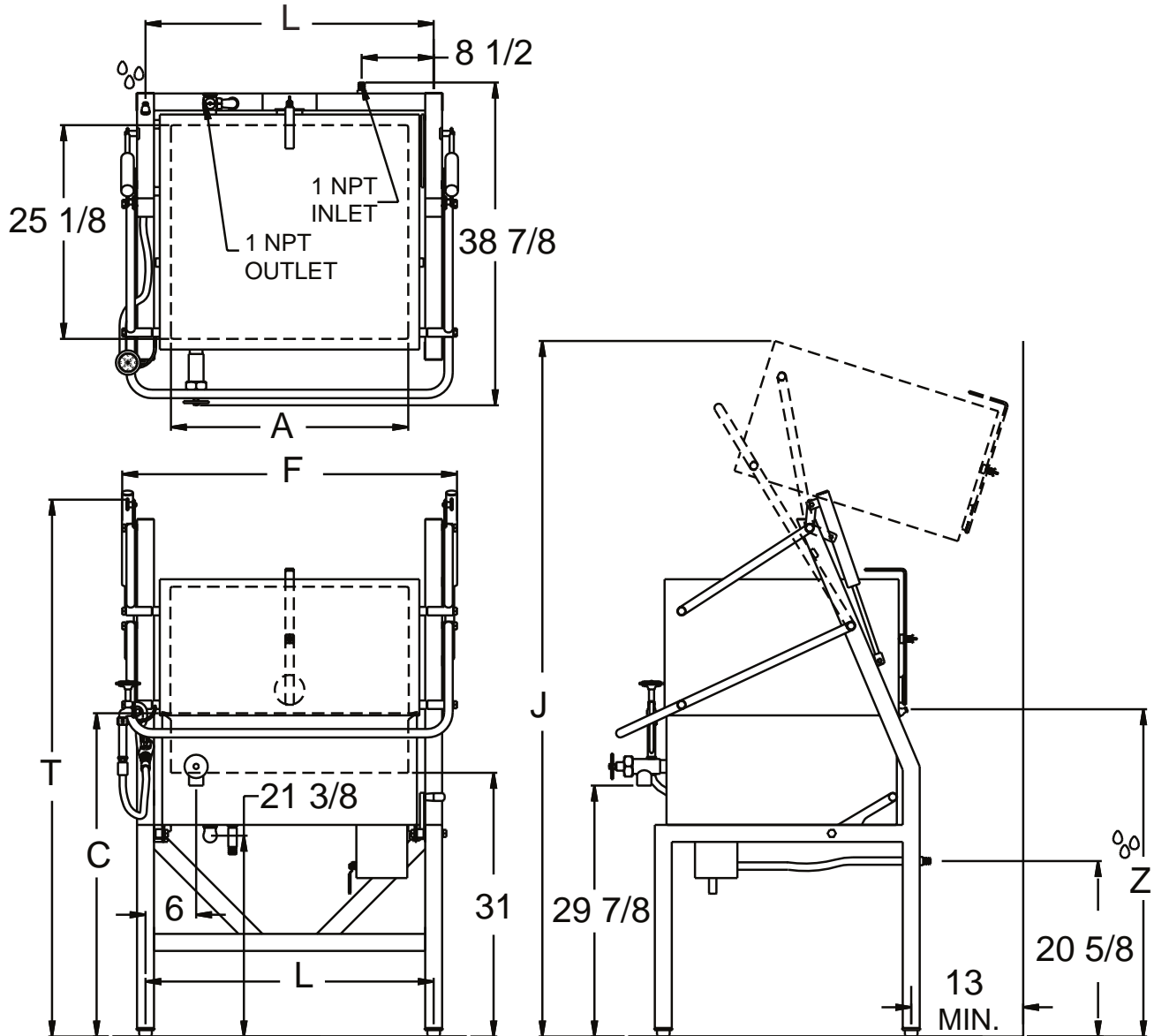
LEGION LEGION INDUSTRIES, INC. ♦ P.O. BOX F ♦ DALLAS, PA ♦ 18612
(800) 833-9803 ♦ (570) 675-1595 ♦ Fax: (570) 675-7551 ♦ www.legionindustries.com

SKITTLE® MODEL DSK

DIRECT STEAM
INSULATED FOR SAFETY™
10° TILTING PAN
LEG MOUNTED, MADE IN USA

MULTI-FUNCTIONAL COOKERS

DRAWING REPRESENTS MODEL DSK10-7 WITH 1 1/2" DRAW-OFF



SKITTLE® DIMENSIONS

Model*	A	F	L	P	Model*	A	F	L	P	Depth	C	J	T	Z
DSK10-5	28.0	39.5	34.0	26.4	DSK15-5	41.0	52.5	47.0	39.4	5	36.0	79.8	61.1	36.3
DSK10-7	28.0	39.5	34.0	26.4	DSK15-7	41.0	52.5	47.0	39.4	7	38.0	81.8	63.1	38.3
DSK10-9	28.0	39.5	34.0	26.4	DSK15-9	41.0	52.5	47.0	39.4	9	40.0	83.8	65.1	40.3
DSK10-11**	28.0	39.5	34.0	26.4	DSK15-11**	41.0	52.5	47.0	39.4	11	42.0	85.8	67.1	42.3

*Dimensions on these drawings are applicable only when using a 1.5" diameter draw-off valve. If a 2" or 3" diameter draw-off valve is required, contact Legion for applicable dimensions.

**DSK5-() information available on request

**Note: Vertical dimensions of 11" deep pan may be reduced by 2" to match 9" deep pan with shorter legs

Revision 101



LEGION LEGION INDUSTRIES, INC. ♦ P.O. BOX F ♦ DALLAS, PA ♦ 18612
(800) 833-9803 ♦ (570) 675-1595 ♦ Fax: (570) 675-7551 ♦ www.legionindustries.com